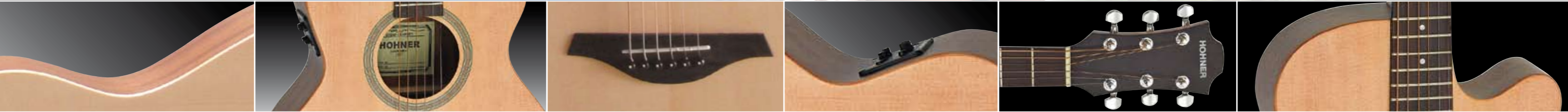




HOHNER



Essential Series



Beautiful Simplicity Simply Beautiful Hohner Essential Series

The Hohner Essential Series offers the right instrument for a broad spectrum of musical genres with its pleasing and attractive looks, its good sound characteristics and an excellent price/performance ratio. These guitars impress with their simplicity and the elegance of their carefully chosen design. All Essential Series guitar models are provided with a top from solid sitka spruce with a classy satin finish, a mahogany back and sides and a nato neck with rosewood fingerboard. The combination of spruce and mahogany results in rich, bright and “woody” tones and is well suited for accompanying vocalists.!

HW40P (Essential Parlor): This model comes with a body shape originally designed in the late 1800s. At 40”, the instrument is a bit shorter than a dreadnought. The body is similar, yet smaller than a grand auditorium and provides for a more even frequency response. The Parlor Guitar is physically smaller, but the sound is not! It is particularly well suited for rooms and environments that should not be overwhelmed with bass. These instruments are predominantly played by guitarists in different blues and folk styles who need a guitar that cuts through on all the strings. The neck width is slightly wider than the dreadnought and is therefore a first choice for fingerstyle players. The smaller body size is very comfortable for smaller players. Grover tuners and factory strings by D’Addario.

HW40F (Essential Folk): Like the Essential Parlor, the Folk size model is 40” tall, with a body shape similar, but smaller than a regular dreadnought. This medium sized guitar body, which is sometimes referred to as “Orchestra” shape, provides a less boomy bass and brings out the mid range tones, which is why fingerstyle guitarists typically prefer this body shape. Grover tuners and factory strings by D’Addario.



HW40P
Parlor

HW40F
Folk

EL-SMJ-CE (Essential Mini-Jumbo Acoustic/Electric Cutaway): The Essential Mini Jumbo was designed with the stage artist in mind. A shallower, smaller body reduces guitar feedback when playing through a PA, while the cutaway gives free access to the higher fret positions. The Fishman ION preamp system includes an equalizer and a self-muting tuner. Grover tuners and factory strings by D’Addario.

EL-SC (Essential Classic): This model is a full size 39” classical guitar that has been designed with the same characteristics of wood selection and finish as the other guitars of the line. The designers applied a very subtle rosette. The combination of sitka spruce and mahogany back and sides provides for crisp, strong, well equilibrated sound. This guitar just sounded superb and played well with Aquila strings, which is why these were chosen as the factory strings for the Essential Classic.

EL-SD (Essential Dreadnought) – No guitar line is complete without a traditional dreadnought model, the mothership of steel string guitars. Players go for the large dreadnought body when they look for strong volume and very pronounced bass. The Essential Dreadnought comes with the same “no frills” understatement as the rest of the series and is also factory strung with a D’Addario set.



Mini-Jumbo
EL-SMJ-CE

Classic
EL-SC

Dreadnought
EL-SD



Just Play! Hohner 500 Series Acoustic Guitars

The 500 series acoustic guitars from Hohner were designed with your craft in mind – making music. From the wood selection, the classy satin finish, the classic binding, the Grover™ tuning machines, to the optional Fishman™ Classic-4T Blend preamp system, the 500 series are perfect for stage and studio and offer rich, accentuated, yet warm tones. Get your hands on a 500 series guitar today and create!

There are four models in the series:

- **DK500** - Java Koa top, back and sides
- **DR500** - Rosewood back & sides, solid pruce top
- **DR550** - Solid rosewood back & sides, solid Cedar Top
- **DL500** – Lacewood top, back and sides

The Lacewood's accentuated highs bring out the best subtleties for finger-style playing, while also maintaining the richness and definition required for flat-picking.

All four models include Grover tuning machines with 18/1 gear ratios, one-piece mahogany neck, rosewood fingerboard and bridge, and AATUSQ by Nubone nut and saddle. They are also available in cutaway Electric-Acoustic (CE) versions (example - **DK500CE**), equipped with the the best electronics in its class: Fishman™ Classic-4T Blend preamp system with 4-band equalization, microphone blend, and built in chromatic tuner, combined with a Sonocore under-saddle pickup. The microphone level control allows you to blend the perfect amount of the internal microphone level with the pickup for amazing ton.

The Classic 4T Blend features:

- 4 Band EQ
- Built-in chromatic tuner with mute function
- Internal microphone
- Sonocore under-saddle pickup
- Blend control for unlimited tonal combinations
- Easy battery access

DK 500

DR 500



DR 550

DL 500



DK 500 CE





Hohner 420 Series Acoustic Guitars Siberian Willow

The Hohner 420 Series of acoustic guitars is designed for players who are looking for something exquisite and different. This line uses beautifully flamed Siberian willow tops that will definitely catch the attention of your audience.

The HW420 is a Dreadnaught Acoustic with Siberian Willow top, back and sides: mahogany neck with 2-way adjustable trussrod and a 20 frets rosewood fingerboard, rosewood bridge, multiply binding, chrome die-cast tuning machines.

The 420 Siberian Willow models are available in the following colours:

- **Natural** (NT);
- **Transparent Black** (TBK)
- **Tobacco** (TOB)
- **Cherry Sunburst** (CS);
- **Emerald Green** (EG);



HW 420 TOB

HW 420 NT

HWA 420 TBK

HWA 420 CS

HWA 420 EG

Hohner 300 Series Acoustic Guitars Journeyman

The Hohner 300 Series guitars are perfectly suited for playing at home or on the road, when rehearsing alone or with friends, or for playing live. With tops, backs, sides and necks made of mahogany, and their traditional dreadnought shape, these guitars provide good sustain and a well-balanced tone while smoothly working enclosed chrome die-cast tuning machine heads keep the instrument in tune.

All guitars of the 300 series come with a two-way adjustable trussrod and have a 20 frets rosewood fingerboard. For stage use, the series also includes the HW300E-AM, an electro-acoustic model with a Shadow (R) pickup and active P7 equalizer and preamp, whereas the HW350 "Journeyman" features a select spruce top and comes with a hardshell case included.

Players can chose their Hohner 300 Series model from a wide range of popular colours and finishes, including classic natural and classy black finishes. The following options are available:

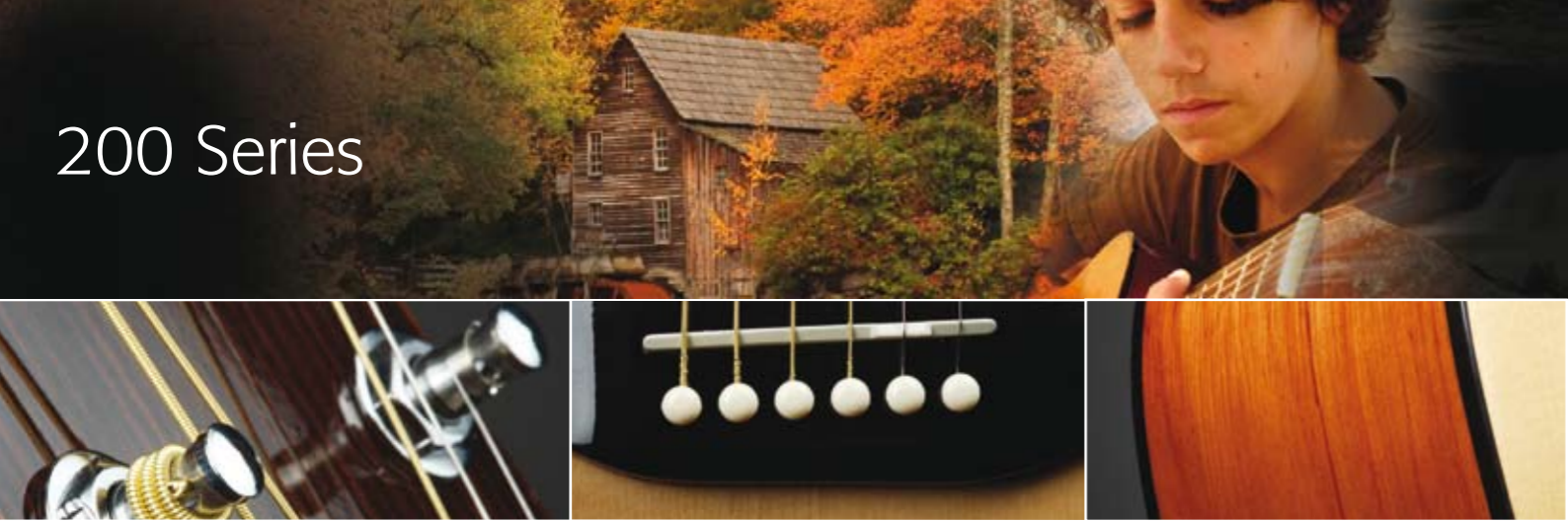
- **Natural Satin** (NS)
- **Natural Gloss** (NG)
- **Sunburst** (SB)
- **Transparent Blue** (TB)
- **Transparent Black** (TBK)
- **Transparent Wine Red** (TWR)
- **Amber** (AM) – HW300E-AM only



HW 300 SB

HW350

200 Series



Hohner 200 Series Acoustic Guitars Big River Blues Package

Step by Step



HW 220

For decades, Hohner has supported generations of students with reliable, well-made instruments that provide good playability and sound. The Hohner 200 Series acoustic guitars include 1/2-scale, 3/4-scale and a full size instrument, perfect for beginners and students in different age groups.

Step by Step – Big River Blues Package

This package includes a special edition of the HW220 dreadnought guitar with an original Hohner “Big River” harmonica made in Germany and a Hohner harmonica neck holder. This set includes everything needed to go out and play guitar and harmonica – guitar strap, picks, digital tuner and guitar bag. You don’t know how to play the harmonica yet? Not a problem! The package includes the “Step by Step” instruction book and CD authored by Steve Baker, one of the most influential players in today’s blues harp scene. Let Steve Baker teach you how to achieve the authentic Mississippi blues sound.

HW220

The Hohner HW220 is a full size dreadnought acoustic with a spruce top in natural finish, mahogany back, sides and neck. Two-way adjustable trussrod, chrome die-cast tuning heads. Available colors: Cherry Sunburst (CS), Natural (N), Natural Satin (NS), Sunburst (SB), Transparent Black (TBK), Transparent Wine Red (TWR)

Classical Series

Leyanda Line Construcción artística de guitarras

The Leyanda line of guitars is hand-crafted in Spain and benefits from a long tradition of building nylon-string guitars. All three Leyanda models are full size classical guitars with a scale length of 657mm. All three Leyanda guitars are offered in high gloss natural finish.

Leyanda LC 10

Full Size Classical Guitar with an oregon pine top, sapelli-mahogany back and sides, African mahogany neck, and a hardwood fingerboard with 19 frets, classical nickel tuning machine heads in silver with perloid white knobs. Flat neck heel for easy access to the high fret positions.

Leyanda LC 20

The LC 20 has a top made of oregon pine, sapelli-mahogany back and sides, African mahogany neck, a hardwood fingerboard with 19 frets, classical nickel tuning machine heads in silver with perloid white knobs. Classical neck heel.

Leyanda LC 30

The LC30 has a solid cedar top, mahogany back and sides, a hardwood fingerboard with 19 frets. Classical nickel machine heads with perloid white knobs. Classical neck heel.



LC 10

LC 20

LC 30

Nylon Series



Hohner HC Guitars Education Line Guitars from Hohner

When learning to play the guitar, a well built, good sounding, and easily playable instrument is key. For many years, Hohner's guitar product line has kept a strong focus on guitars for students. Every year, thousands of young players worldwide start learning how to play on a Hohner guitar. The guitar team at Hohner is proud of this achievement and established company-wide quality criteria for the production of the education series guitars in order to maintain a consistent and reliable quality standard for these instruments. The guitars in the Education Series are offered in different sizes from half to full scale in order to address the specific requirements of the different age groups, and to offer an upgrade path for students who continue playing as they grow up.

HC06

Our bestseller! The Hohner HC06 is a full size Classical guitar with a spruce top, nato (eastern mahogany) back, sides and neck, hardwood fingerboard with 18.5 frets and the all-time favorite high gloss finish.



HC 06

HC 06E
Same as HC06 with
pick up

HC02

This Student Half-Size Classical guitar has a scale length of 550mm and fits children between 5-10 years of age. It has a spruce top, nato (eastern mahogany) back, sides and neck; Fingerboard and bridge are made of hardwood; 18 frets. Everything you need to get going: This guitar is also offered in a complete package including a gig bag, an extra set of strings and a string winder.

HC03

This Student 3/4-Size Classical guitar has a scale length of 590mm and fits players between 8-13 years of age. It has a spruce top, nato (eastern mahogany) back, sides and neck (18 frets); Fingerboard and bridge are made of hardwood. Color: Natural, Gloss

HC20

The HC20 is a full size classical guitar with the same dimensions as the HC06, but with a solid spruce top; 18.5 frets; mahogany back and sides; rosewood fingerboard and tuning machine heads with white perloid knobs. It is offered in natural high gloss finish.



HC 02

HC 03

HC 20

Student Series



Guitars for Children

Your first guitar should be a quality instrument designed to help you achieve your playing goals. Hohner's student models are designed with that in mind. From the full-size HW220 dreadnaught to the half-size classical guitar, all of Hohner's student instruments give you the right start for pursuing your musical dreams.

Hohner guitars are being used to teach the joy of music everyday in schools worldwide. Hohner is proud of its heritage in music education and enjoys being a part of the growing movement of guitar education in public schools through its membership in the Guitar and Accessories Marketing Association (GAMA)

HAG250P

This half-size nylon string folk guitar is recommended for children between 5 and 8 years of age and is made of agathis (top, back, sides and neck) with an 18-fret fingerboard and in-line chrome tuning machine heads with pearloid knobs. The HAG250 is delivered in a coloured transport carton and includes a songbook.

HW03

The HW03 is a 7/8 scale junior or travel size dreadnought steel string acoustic guitar with a spruce top, mahogany neck, back and sides and a steel-reinforced neck. This model is recommended for young players between 8 and 12 years of age, but many musicians also like using it as travel guitar while on the road.



HAG 250P

HW 03

LANIKAI UKULELES

Designer Ukuleles Natural Koa and Spalted Mango

The long-established use of koa on ukuleles is no accident: Nothing else sounds or looks like koa! The Natural Koa (NK) concert and tenor ukuleles from Lanikai have solid koa tops and koa back and sides and demonstrate Lanikai's commitment to ukulele tradition.

Lanikai spalted mango ukuleles are an exciting addition to the ukulele world! Spalted mango has a striking appearance and unique tonal characteristics with a midrange similar to mahogany and the roundness of spruce. The Lanikai Spalted Mango ukuleles are exquisitely beautiful and their construction from solid spalted mango results in a very pleasant, mellow tone. Concert and tenor models are available.



NKC

SMC

LANIKAI
Makes Me Happy!



Lanikai Flame Maple Series

This series of ukuleles comes with a solid spruce top and beautiful backs and sides made of flame maple. The crispness of flame maple combined with the solid spruce top result in particularly pleasant tone quality. The beauty of the flame maple grain is enhanced by real abalone purfling and multi-ply binding. The Lanikai Flame Maple Series includes soprano, concert, and tenor size models. Chrome die-cast tuners ensure stable tuning.



ULFM T

ULFM C

ULFM S

Lanikai Ukuleles Curly Koa Series

Koa is one of the traditional tonewoods used by the famous Hawaiian ukulele builders for over a century. Hawaiian koa is rare and especially sought for because of its distinctive curly grain, which is why it is frequently referred to as "curly koa". Hawaiian koa is a gorgeous red-hued wood mostly found on the big island of Oahu, and is used for ukuleles that look as beautiful as they sound.

The Lanikai Curly Koa Series uses curly koa for the tops, backs and sides and a real maple wood binding. The series covers the full range of soprano, concert, tenor and baritone models to suit a diversity of styles and players. For stage or session musicians, the tenor model is optionally available with a Shadow JW2 nanoflex piezo pickup and pre-amp system.



CK-T

CK-C

CK-TEQ

CK-S



Lanikai Ukuleles LU Series

Built with nato (Eastern Mahogany), the LU series is Lanikai's most popular family of affordable quality ukuleles. Popular ukulele forums and blogs witness their excellent playability and tone. They have become a first choice not only for hobby players, but also for renowned professional musicians who use them for stage performances and studio recordings. The series offers the standard (soprano) sizes with the LU-11 and LU-21, and also the LU-21P pineapple shaped ukulele. The concert models are offered in dark stain wood finish (LU-21C) as well as in glossy black (LU-21CBK) with an optional Belcat UK-2000 pickup (LU-21CEBK). The tenor model (LU-21T) is optionally available with a pickup (LU21TE). The LU-21B baritone ukulele appeals especially to guitarists.

For players looking for more and even fuller sound possibilities, additional tenor size models are available: The LU-6 is a 6-string tenor ukulele typically tuned in GCEA. In contrast to the 4-string instrument, the second C-string is octaved and the high A-string doubled with a low A. This inversion allows for very interesting sound combinations that will not only appeal to guitarists! The LU-6 is also available as an acoustic-electric version (LU-6E). An 8-string tenor ukulele with octaved G- and C-strings and doubled the E- and A-strings is also available with the LU-8, which can also be ordered as an electro-acoustic model (LU-8E) with an active Belcat 2000 pick-up and pre-amp system. Lanikai ukuleles ride the online wave! For the most current info on Lanikai ukuleles, please visit www.lanikaiukes.com or www.lanikai-ukulelen.de



ULU 11 ULU 21



ULU 21 B



ULU 21 TE
also available
without pick up



ULU 21C ULU 21P ULU 21CE BK



ULU 8 E
also available
without pick up



ULU 6 E
also available
without pick up

KOHALA



Kohala Ukuleles Standard Series

In the beginning, there is... Kohala. Kohala by Lanikai. The Kohala series of standard ukuleles includes two soprano models so that even the most frugal players can ride the wave of pure Lanikai sound! The Kohala ukuleles include a songbook so you will be making music in minutes! The Kohala models are made from nato (eastern mahogany) with 12 frets and chrome/ivoroid geared tuning machine heads. Two finish options are available: Dark stain (Kohala) and light walnut satin finish (HU-212).

Many people like taking their ukulele on the road. Hohner offers specially fitted gig-bags and hard cases for the Lanikai ukuleles that will protect your little precious instrument when you take it outside.

The ukulele gig-bags are made from strong, heavy-duty padded black cordura, and have two-way zippers, an external zip pocket and shoulder straps. They are available in the following sizes: Soprano, concert, tenor and baritone.

If you want maximum protection for your ukulele, get a specially fitted ukulele foam-core case. The Lanikai cases protect from mechanical damage as well as drastic changes in humidity and temperature. The Lanikai hard cases are available for soprano, concert, tenor and baritone ukuleles. They are covered with black cordura on the outside, padded with black plush on the inside and have an external zip pocket and optional shoulder straps.



EGS

Ergonomic Guitar System

EGS – Ergonomic Guitar System

The EGS is an original design patented by Hohner. It was developed in collaboration with industry designers, guitar builders and musicians. The Hohner EGS is a versatile electric guitar manufactured in Europe focused on ergonomic play and posture.

The EGS is for guitarists who need a convenient instrument that is easy to play and provides exceptional sound versatility in different environments such as studios, classrooms and the stage. Unlike other conventional guitars designs, this guitar reduces strain on the guitarist's body because it can be played equally well while seated or standing up. The unique ergo-wing permits even classical playing postures.

Active single-coil and humbucker pickups from EMG enable strong and typical electric sounds, while an additional piezo pickup permits playing acoustic sounds.

Specifications:

- Alder body
- American Maple neck
- Ebony fretboard with a graphite nut
- Active EMG pickups (selectable using 5-position switch). Neck: S-81 Single Coil, Middle: S-81, Bridge EMG-85 Humbucker
- Shadow tremolo with built-in piezo pick-up to allow mixing in acoustic guitar sounds. The Shadow piezo equalizing preamp is accessible from the back provides separate volume, treble, mid and bass controls
- Schaller M6 locking tuning machine heads
- Schaller security locking pins
- Ergo-Wing Anodized high-grade aluminium.

Its length is adjustable, and can be rotated into two different wing radius positions that comfortably fit on the guitarist's legs for different playing positions. The guitar is center-balanced which is convenient when operating recording computer equipment in the studio.

EGS
Straylight



EGS
Ice Blue

EGS
Blackhawk



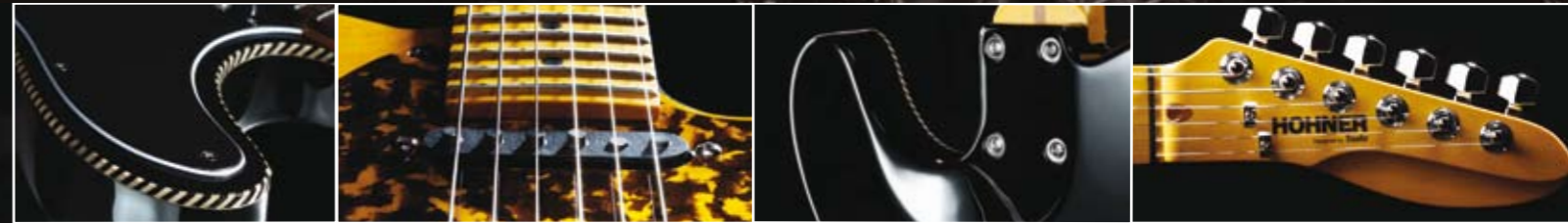
HOHNER

Designed by Staufer

Hohner Designed by Staufer guitars are custom precision instruments developed by Hohner in collaboration with André Waldenmaier, the founder of Staufer Guitars in Germany.

Hohner offers two models that are conceptually a re-issue (with de luxe components) of an instrument designed by Hohner in the late 70s, which became legendary through its acceptance by international superstars.

The Artist Elite uses a swamp-ash body with a stunning flame maple top and back and beautiful centre body stripe made from American walnut. It comes with Gotoh hardware, Schaller M6 mini tuning machine heads and security locking strap-pins, a custom pickup set developed by Harry Häussel and Staufer Guitars and the eye-catching tortoiseshell pick-guard inherited from its famous ancestor.



The Artist Elite

Black Prince



The Black Prince comes in glossy black, with a unique all wood body binding and features a VSVG Wilkinson tremolo system by Gotoh and a custom pickup configuration consisting of two Staufer Blues single coils and a Staufer hot humbucker. The Black Prince is equipped with Schaller M6 locking tuner machine heads and Schaller security locking strap-pins.

Both models are custom-designed and hand-assembled in Europe. The pickups are made in Germany renowned pickup designer Harry Häussel.



André Waldenmaier and Peter Maffay show the Hohner Black Prince signed by the Peter Maffay band and donated for a charity auction to the benefit of the Peter Maffay foundation for traumatized children.

Headless

Headless Guitars

Lose Your Head - Hohner Headless Series

Since their inception in the late 80s, headless guitars and basses from Hohner, licensed by Steinberger (R) have become a legend. The instruments are short and light and therefore ideal for travel, yet they provide a full scale. Where else do you get a full scale guitar that short (less than 80cm) or a full scale bass under 1m?

The Hohner G3T has a solid maple neck-through construction with 24 frets, a two-way adjustable trussrod, rosewood fingerboard and a rosewood fingerboard. Its locking tremolo bridge is licensed by Steinberger. It comes with two passive single coils and a humbucker by EVL, each selectable by a separate mini toggle-switch. For playing comfort while sitting down, the G3T comes with a foldable legrest.

Colors:

- Black (BK) – lefthand model available!
- Grey Nickel Stain (GNS)
- Oil Finish (OIL) – lefthand model available!

The active Hohner B2ADB 4-string headless bass comes with a detunable bridge licensed by Steinberger, active electronics and two humbucking EVL pickups, two active tone controls, two volume controls and one concentric tone control. The B2ADB has an active/passive switch and is one of the very few active basses that can also be used in passive mode. The active status is indicated by a red status LED. You will never be down again because of a drained battery! The body is solid American maple, the neck is maple with a two-way adjustable trussrod, 24 frets and a rosewood fingerboard. The B2ADB comes with a foldable legrest.

Colors:

- Black (BK) – lefthand model available!
- Grey Nickel Stain (GNS)
- Oil Finish (OIL) – lefthand model available!

The Hohner B2A 4-string headless bass is identical to the B2ADB, except for the bridge. The B2A comes with a standard 4-string headless bridge licensed by Steinberger. The Hohner B2A Headless Bass gives you a powerful sound with plenty of punch, grunt and bottom end!

Colors:

- Black (BK) – lefthand model available!



G3T



B2ADB



B2AW-WS



B2B

In response to popular requests, there is a reissue of the Hohner B2AV-WS headless 5-string bass in the classy walnut stain with active electronics. It comes with a 5-string bridge licensed by Steinberger, two EVL J-style pickups, two volume controls and one concentric tone control. Like the B2ADB, the B2AV is equipped with active tone control and the active/passive switch with the red status LED. The B2AV has a foldable legrest.

The Hohner B2B headless 4-string bass has been a standard since the very beginning of the line. It has a solid American maple body, a bolt-on maple neck with a two-way adjustable trussrod, 24 frets and a rosewood fingerboard. The pickups are passive in a traditional PJ configuration with two volume controls and one tone control. The bridge is licensed by Steinberger.

Colors:

- Black (BK)- lefthand model available!

All Hohner headless guitars feature:

- Solid American maple body
- Smooth 24-fret rosewood finger board over a maple neck
- Steinberger® licensed hardware

Headless Basses



1857



1987



Authorized Hohner Distributor:
Ihr autorisierter Fachhändler

Hohner Musikinstrumente GmbH & Co. KG
Andreas-Koch-Straße 9
D-78647 Trossingen
Germany
www.hohner.de



Erz.-Nr. 0-264.249-0000/0 WM 4247

